



Friends for Life

The Eppendorf *epMotion*® Series:
Discover the variety of automated liquid handling



Enjoy the new epMotion® series through easy to use and flexible automation of your applications and highly reproducible and accurate pipetting results.

»Automation increases precision and reduces workload in one – discover the possibilities for your lab.«

With the new Eppendorf epMotion® family of automated pipetting systems, you will see things in a new light. All your routine pipetting tasks, whether small or large, will be automated with more accuracy and reproducibility than you might have experienced with manual pipetting. Learn how simple it is to switch from manual work to automation.

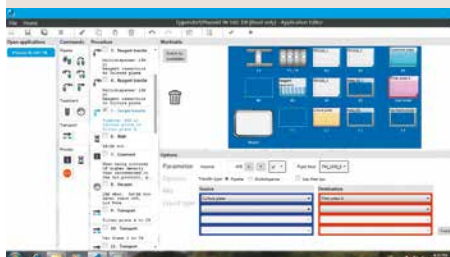
Robust Hardware

- > epMotion systems are available in 3 sizes, all designed with minimal footprint
- > Self checking robotic system, that reduces startup time
- > High precision dispensing tools for 200 nL to 1,000 µL
- > Optical sensor verifies worktable loading before the run



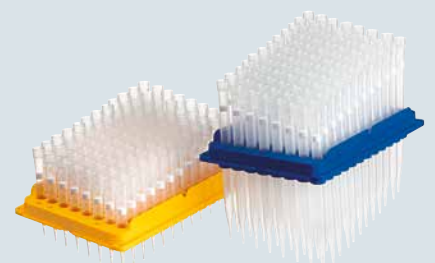
epBlue™ – Intuitive Software

- > Enjoy the new concept of user guided software to start right away
- > Learn all the programming flexibility you need in hours, not days
- > Upgradeable to barcode tracking and GLP/GMP software versions



epMotion Accessories, Consumables & Services

- > Get great diversity with large portfolio of accessories
- > As an open platform epMotion works with your favorite labware
- > High quality consumables guarantee high accuracy and reproducibility of your results
- > Choose our premium service to support and maintain your equipment operation



Eppendorf epMotion® Portfolio



Eppendorf epMotion® 96

The new epMotion 96 is an easy to use bench top system for high precision pipetting in 96- and 384-well plates. It overcomes the limits of manual multichannel pipetting with its ergonomic design and intuitive controls. epMotion 96 is a great tool for anyone who needs fast and precise liquid handling in 96- or 384-well formats. Save time and money while getting better reproducibility of your results from cell based assays, ELISA, cell seeding, nucleic acid quantification, plate reformatting or other applications.

Product Features epMotion 96

- > Electronic pipetting with parallel piston movement for better precision and reproducibility
- > Auto-detection of tip sizes without the need to change heads
- > Two tip sizes covering the 0.5 µL to 300 µL operational range for maximum accuracy
- > Reuse tip capability



Eppendorf epMotion® 5070

Our smallest member of the epMotion family is the most compact solution for accurate and reproducible automated pipetting. This makes the epMotion 5070 a perfect match for any routine application such as serial dilutions, reagent distribution, sample transfer from tubes to plates, and sample normalization.

Product Features epMotion 5070 / 5070f

- > 4-position worktable and 3 virtual positions
- > Small footprint of 65 × 48 cm fits on small lab bench
- > Space saving touch screen tablet or Multicon touch PC for enhanced functionality
- > Automatic tool exchange for 2 tools
- > Reuse tip capability



Eppendorf epMotion® 5073

These automated pipetting systems are uniquely tailored for PCR setup and nucleic acid purification, yet retain the flexibility that allows their use as open platforms for diverse automated liquid handling applications. They automate and simplify what are traditionally complex, labor intensive pipetting tasks, saving time and improving the reliability and reproducibility of results.

Product Features epMotion 5073I / 5073m

- > 6-position worktable
- > Application specific software, tools and accessories included
- > Option for gripper, 1 thermal module* or Eppendorf 3D-MagSep™ module**
- > CleanCap option for UV decontamination and HEPA air filter

* Available only with P5073 and 5073I

** Already included with M5073 and 5073m



Eppendorf epMotion® 5075

The epMotion 5075 is the ideal solution for diverse liquid handling demands. It offers the same outstanding accuracy and precision as epMotion 5070 & 5073. The available options make the 5075 an excellent tool for applications such as next generation sequencing, real-time PCR set-up, magnetic bead based purification, cell based assays or any routine pipetting tasks.

Product Features epMotion 5075I / 5075t / 5075v / 5075vt / 5075m

- > Up to 15 worktable positions
- > MultiCon PC controller with simulation, network and software upgrade options
- > Automatic exchange of 4 dispensing tools
- > Option for gripper and 1–3 thermal modules
- > System control by touch, mouse, keyboard or network
- > Available Eppendorf ThermoMixer®, Vacuum manifold and magnetic separation options
- > Available as CleanCap versions

Eppendorf epMotion® Feature Overview



Optical Sensor¹

Checks worktable loading for tips (type and number), labware type, and even liquid volumes in vessels for safe operation.



Liquid waste tub

Extra reservoir with large working volume can be mounted in waste box of epMotion.



Clean Cap

with UV lamp for decontamination and HEPA filter for clean air inside. Optional for new epMotion 5073 & 5075 versions.

¹ US patent 6,819,437 B2



Dispensing Tools

8 autoclavable dispensing tools from 200 nL to 1,000 µL are available for programming; single- or multi-channel; all calibrated based on ISO 8655, part 6.



Gripper Tool

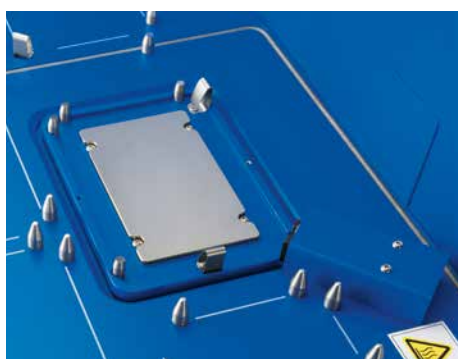
Allows transport of labware on worktable of 5073 or 5075 versions. Stacking of up to 5 plates is possible.

Accurate Pipetting Performance

Achieve highest pipetting precision and accuracy with free-jet or contact dispensing by the Eppendorf air-cushion pipetting technology together with dedicated epT.I.P.S. Motion in a volume range from 0.2 to 1,000 μL . While free-jet pipetting minimizes cross contamination, contact pipetting can be used for better precision of small volumes.

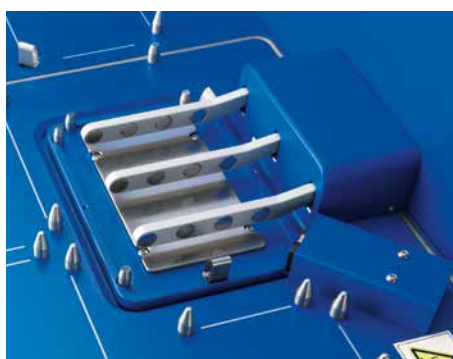
Flexibility of Labware Choice

Use the labware you use today with a growing data base of >1,200 labware files. Tubes range from 0.2 mL PCR to 50 mL conical tubes. Plate format of 6 to 96 and 384 wells supported. Micro plates and deepwell plates from various suppliers with special adapters for cooling and heating in our large portfolio of accessories can be applied.



ThermoMixer®

Fully integrated Eppendorf ThermoMixer with 2D Mix-Control improves yield and application results, e.g. resuspending bacteria pellets or magnetic beads. Peltier element for heating and cooling of sample and/or reagents.



Eppendorf 3D-MagSep™ Technology

Combination of magnetic finger module and Eppendorf ThermoMixer facilitates magnetic separation, mixing and temperature control in one location.



Integrated Vacuum Station

Loaded and unloaded with the gripper, the vacuum station adapts automatically to any filter plate type. Silent operation of internal pump with no need for extra tubes, wiring or reservoir maintenance.



Automatic Tool Exchange

Choose the tools you need for your application from 6 dispensing tools and a gripper. Dependent on the epMotion version, 2 to 5 tools can be provided on the worktable for automatic exchange.



Small Footprint – Large Deck

With 4, 6, 12 or up to 15 positions in SLAS/ANSI format the epMotion family gives you all the flexibility you need for your application.

Easy & Fast Access

Control epMotion by touch or mouse with easy programming. Fast initialization of the instrument let you start right away without manual teaching or calibration of robotic system.

Housing

Completely contained housing including door safety mechanism

Thermal module

Option for heating or cooling of samples and reagents (0–100 °C)

International users love epMotion®!

Whether it is genomics applications, like PCR set-up, SNP detection, next generation sequencing, or nucleic acid purification, complex assay set-up or cell culture applications, read what scientists worldwide say about epMotion.

»» *The Eppendorf 5075's improvements to accuracy, reproducibility, and throughput has changed how we approach almost everything we do in the lab. In addition, the 5075 was instrumental in the development of our novel HIV phenotyping test.* ««

Richard Gibson

Assistant Director · University
Hospital Translational Laboratory ·
Cleveland, USA

»» *My group has made great use of the epMotion 5073. It provides sufficient flexibility for my group to use routinely for 384 well qPCR setup, enabling us to increase throughput and reduce reagent usage. More importantly, the modular nature of the design and flexibility of the instrument runs, mean we have been implementing in a range of other molecular biology applications that benefit from automation, such as scalable plasmid construction. The ability to upgrade this instrument with gripper arm, temperature control and both single and multichannel capabilities means we are in a good position to adapt rapidly as new protocols are developed.* ««

Dr. Steven M. Pollard

UCL Samantha Dickson Brain Cancer Unit ·
University College London · London, United Kingdom

»» *We are using our three epMotion 5075 systems already for several years for automated gDNA purification from plant and fungi, PCR setup for routine analysis of fungicide and herbicide resistance genes and other general liquid handling tasks. The epMotion automation has significantly reduced our work load for these assays and made our workforce more efficient, because team members can now focus on downstream applications. We also appreciate the better reproducibility of results and the high flexibility we get with this easy to handle automation systems.* ««

Bernhard Jaser

Senior Research Fellow · Agrobiologic Research &
Consulting · EpiLogic GmbH · Freising, Germany

»» *We highly value the epMotion 5075 TMX for its accuracy, easy programming, and it's flexibility in adapting to different protocols and throughputs. We obtain excellent results in our real-time PCR assays and sample library preparation for our NextGen sequencing protocols.* ««

Gisela Mir PhD

Head, Molecular Genomics facility · Cancer
Research · Peter MacCallum Cancer Centre ·
Melbourne, Australia

» We are happy to use the epMotion 5070 for research applications, such as our Anti-Cancer Drug Screening as it accelerates our pipetting work for viability and apoptosis cell assays to combat a cancer cell line with the reproducibility that we need. «

Gilberto C. Franchi

Pharmacist research fellow · University of Campinas · São Paulo, Brazil

» epMotion 5075 has been installed in our lab since two years and is working satisfactorily. The system is completely open with respect to labwares and consumables. The features we liked in the instruments being the contact free liquid level sensing, its volume accuracy and low maintenance cost. We also appreciate the support extended by Eppendorf India in our Application setup. «

Dr. D. Srinivas Reddy

Special project Scientist · PTTC, International Crops Research Institute for the Semi-Arid Tropics · Hyderabad, India

» Our group has made fantastic use of the epMotion 5070 and it now forms an indispensable core of our small and heavily used qPCR facility. Its reliability, accuracy, ease of use has been key to the success of our qPCR experimentation. The ability to accurately and reproducibly pipette low volumes has both increased the quality of our results and kept consumable costs under control. This has meant more results for the same money, always something to bring a smile to the laboratory head. «

Dr. Chris Winefield

Senior Lecturer in Plant Biochemistry and Molecular Biology · Lincoln University, New Zealand

» epMotion P5073c is a robust system and yet with the flexibility which satisfied our laboratory's multiple functions. «

Dr. Masafumi Inoue

Group Leader (Molecular Diagnostics Group) · Experimental Therapeutics Centre (ETC), Agency for Science · Singapore



» The Eppendorf epMotion 5070 has been installed in our lab and is working satisfactorily. The system has been used to automate some of our assays such as preparation of cDNA, and setting up RTQ PCR assays in 96-well format. In all we are more than satisfied with the performance of the system and support provided by the technical experts. «

Dr. M. Padigaru

Associate Director – Biomarker discovery · Piramal Life Sciences Ltd. · Mumbai, India



Eppendorf epMotion® 96 and 96xl

The epMotion 96 and 96xl improve workflow and ensure reproducibility by making pipetting whole 96- and 384- well plates faster and easier than ever.

Product Features

- > Volume ranges 0.5 μ L to 300 μ L (96) or 5 μ L to 1,000 μ L (96xl)
- > Electronic pipetting with synchronous 96-channel piston movement for better precision and reproducibility of results
- > Auto-detect function for tip size
- > Use 50 μ L, 300 μ L and 1,000 μ L reload tips for best accuracy
- > Intuitive and industry proven software concept and convenient touch screen control
- > Intelligent, preset applications: aspiration, dilution, multi dispense, pipette and mix
- > Available with 1 position or 2-position slider
- > Compact design to fit under the laminar flow hood
- > Reduced risk of repetitive strain injury (RSI)

Applications

- > Replication and reformatting of microplates
- > Cell seeding and media change
- > Reagent and compound addition
- > 384 wells by 4 times 96 well pipetting
- > Cell-based assays
- > ELISA handling (plate coating and washing)
- > Biochemical assays
- > Magnetic bead based nucleic acid purification

Ease Your Workflow



1



2

1. Insert the appropriate tip type for 0.5–50 μL or 5–300 μL or 10–1,000 μL into the loading frame.
2. Slide loading frame into epMotion 96 and apply lever to easily attach tips to the 96 nose-cone array.
3. Select mode, e.g. »Pipette + Mix«, and adjust plate on lifting table towards the tips (if 2-position slider is mounted, source or destination position is selected).
4. Touch »Aspirate« to take liquid from source plate, change to destination plate and touch »Dispense«.



3



4



Eppendorf epMotion® 5070

The **epMotion 5070** is our most compact solution for accurate and reproducible automated pipetting. With four worktable positions and small footprint the epMotion 5070 is a perfect match for any routine application such as serial dilutions, reagent distribution, sample transfer from tubes to plates, and sample normalization.

- > 4 labware positions, plus unlimited virtual positions
- > Pipetting range from 0.2 µL to 1,000 µL
- > Compatible with micro- and PCR plates up to 384 wells
- > Compatible with tubes from 0.2 mL to 50 mL
- > Liquid level detection without conductive tips
- > Optical sensor* checks the loaded deck
- > Safety hood with monitored front door
- > Automatic exchange of 2 pipetting tools
- > Space saving EasyCon tablet or MultiCon PC controller

Applications

- | | |
|-----------------------------------|----------------------|
| > PCR/qPCR Setup | > Serial dilutions |
| > Plate reformatting and spotting | > Cherry/hit picking |
| > Tube to plate transfers | > Normalization |



Automatic tool exchange for more flexibility of pipetting variations

* US patent 6,819,437 B2



Eppendorf epMotion® 5070f

With the **epMotion 5070f** all the benefits of automated pipetting are available for liquid handling tasks inside a cell culture bench or fume hood. Cell maintenance is one of the most repetitive tasks in life science research. The epMotion 5070f allows you to automate key processes such as seeding cells, media changes, or performing assays e.g. cytotoxicity. It enables you to handle 6, 24 or 48 well plate or even denser formats from 96 to 384 wells.

Same as 5070, plus

- > Light barrier beam – monitors the closure of the bench hood for safety
- > Pre-programmed cell culture labware
- > Sterile pipette tips available
- > Autoclavable pipetting tools



5070f in cell flow bench



Eppendorf epMotion® 5073l

epMotion 5073l is a flexible system for automating time consuming and complex pipetting procedures. The epBlue software makes programming new protocols easier than ever. The high accuracy of the epMotion 5073 makes all pipetting procedures more precise, reproducible and fully standardized, resulting in the highest quality data. The epMotion P5073 bundle package includes all accessories required for preparing PCR samples; only consumables need to be ordered separately.

Applications

- > PCR set-up
- > Serial dilution and normalization of samples
- > Sample or reagent transfer
- > Sample mixing and tempering
- > Assay set-up
- > Media change and other cell culture applications

- > 6 ANSI/SLAS microplate positions
- > Compact control tablet with touchscreen or mouse operation, USB data transfer
- > Optical sensor* for detecting liquids, labware, tips
- > Automatic replacement of 2 pipetting tools
- > Volume range of 0.2 to 1,000 µL for maximum pipetting accuracy
- > Compatible with tubes (0.1 to 50 mL) and microplates with up to 384 wells
- > Calibrated 1-channel and 8-channel pipetting tools
- > Optional UV lamp and HEPA filter system for decontamination and clean air conditions
- > Fully enclosed, compact housing with door lock
- > Optional MultiCon touch PC controller with mouse and keyboard
- > Thermal module for heating or cooling of samples or reagents

* US patent 6,819,437 B2



Eppendorf epMotion® 5073m

epMotion 5073m is two systems in one. First, a customized system for automated nucleic acid purification of 1 to 24 samples using magnetic-bead based reagent kits. The Eppendorf EasyCon™ tablet software provides simple operation. Secondly, a flexible system for automating time-consuming liquid handling tasks. The pipetting procedure is more precise, reproducible and fully standardized, making your workplace more ergonomic and safer. The epMotion M5073 bundle package includes all accessories required for nucleic acid purification; consumables sold separately.

Applications

- > DNA and RNA purification
- > PCR set-up
- > Sample or reagent transfer
- > Sample mixing and tempering
- > Assay set-up
- > Media change and other cell culture applications

- > Optical sensor* for detecting liquids, labware, and tips
- > Volume range of 0.2 to 1,000 µL for maximum versatility
- > Optional UV lamp and HEPA filter system for sterilization and clean air conditions
- > Calibrated 1-channel and 8-channel pipetting tools
- > Automatic replacement of 2 pipetting tools and gripper
- > Compact control tablet with touchscreen or mouse controls and USB data transfer
- > 6 SLAS/ANSI worktable positions
- > 3D MagSep technology; mixing, temperature control, and magnetic separation in one location
- > Compatible with micro-plates of up to 384 wells and 0.2 mL to 50 mL tubes

* US patent 6,819,437 B2



Eppendorf epMotion® 5075I

The epMotion 5075I is the perfect solution for more complex pipetting tasks. It offers the same precision and accuracy as the epMotion 5070 & 5073, making it the ideal tool for demanding applications and higher throughput.

The 15 positions and the automatic tool exchange expand the application range to handle complex patterns and higher sample numbers. With heating, cooling and the gripper option, the epMotion 5075I is one of the most flexible automated liquid handling systems available.

- > 15 SLAS/ANSI deck positions and unlimited virtual positions
- > Automatic exchange of 4 pipetting tools and gripper
- > Plate stacking – 5 microplates or 2 deepwell plates can be stacked by the gripper
- > Volume range of 0.2 µL to 1,000 µL for maximum versatility

- > 3 thermal module options for heating or cooling of samples or reagents
- > CleanCap option – UV lamp and HEPA filter for decontamination and clean air conditions
- > MultiCon PC controller to run preinstalled epBlue software by touch or mouse and keyboard
- > Upgradable for barcode tracking and GLP/GMP software versions





Eppendorf epMotion® 5075v

The **epMotion 5075v** is all about productivity. With its integrated vacuum station the epMotion 5075v allows true walk-away automation of purification protocols that rely on vacuum filtration.

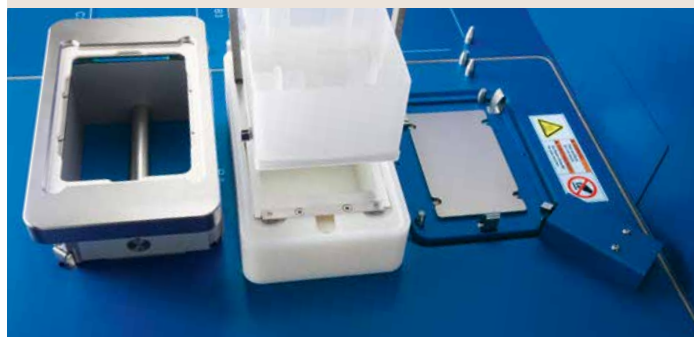
Same as 5075I, plus

- > 12 SLAS/ANSI deck positions
- > Integrated vacuum pump – silent operation, no tubing, wiring, and reservoirs to maintain

- > Vacuum station is fully integrated and automatically adapts to filter plates controlled by software
- > Gripper for plate & labware transport
- > 3 thermal module options (2 in case of 5075v)
- > Also available as 5075vt version with integrated ThermoMixer



epMotion 5075vt with integrated Eppendorf ThermoMixer and Vacuum station





Eppendorf epMotion® 5075t

The epMotion 5075t includes an integrated Eppendorf ThermoMixer module to mix, heat or cool samples and reagents. He can be loaded and unloaded with the gripper and pipetting to the mixer is possible before and after mixing steps. It is fully software controlled enabling pipetting onto other worktable positions while the mixer is in operation.

Applications

- > Nucleic acid purification
- > PCR/qPCR setup
- > Enzymatic assay setup
- > Next generation sequencing applications
- > Cell based assays

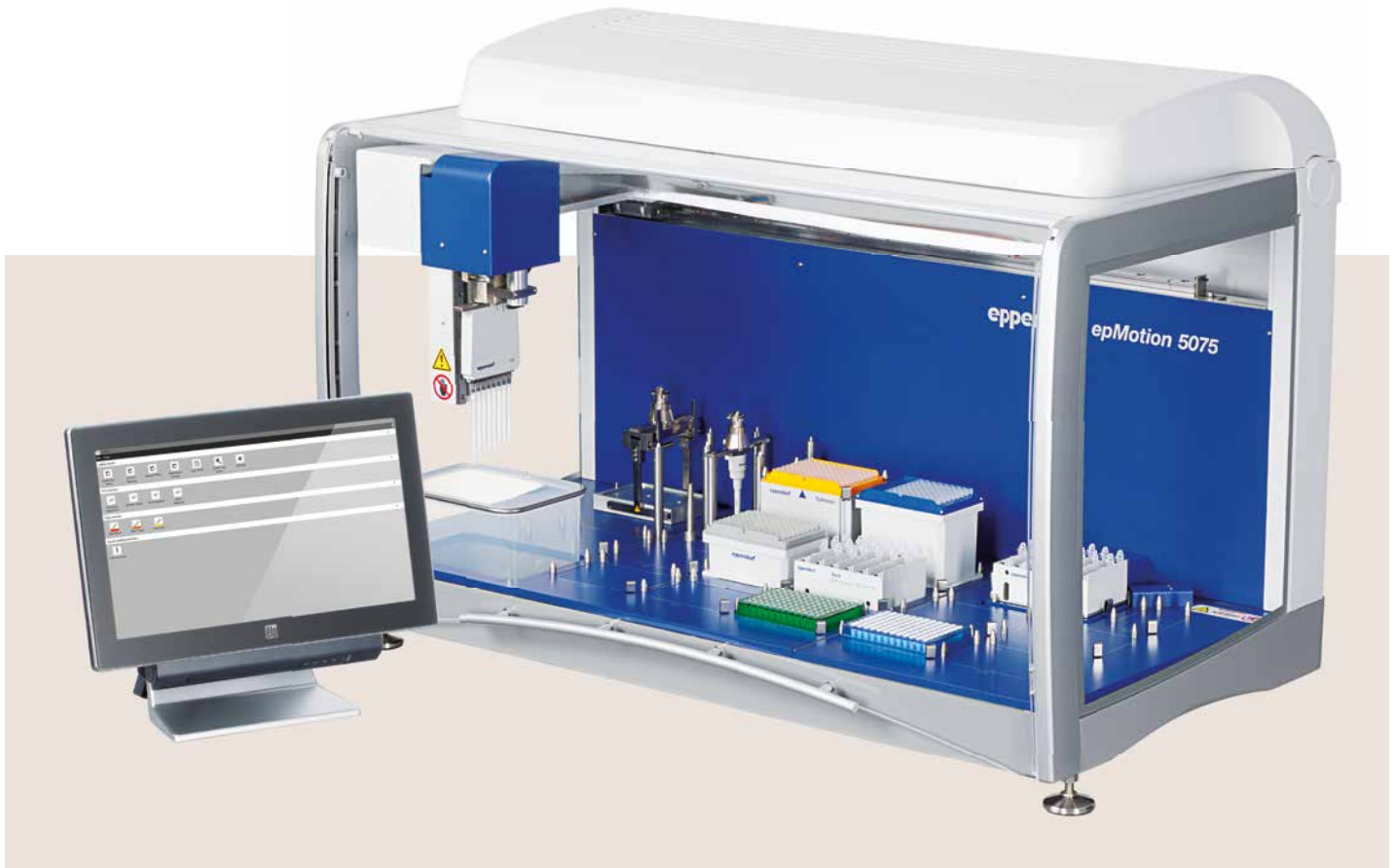
Same as 5075i, plus

- > Integrated Eppendorf ThermoMixer with 2D Mix-Control technology
- > Temperature control range 15 °C below RT to 95 °C
- > Automatic securing of labware for mixing up to 2,000 rpm
- > 14.5 deck positions, 14 SLAS/ANSI plus small position for special reagent reservoir rack (3 reservoirs)
- > 2 thermal module options

epMotion® 5075 NGS solution

NGS sample preparation is a labor-intensive process, which requires experience, precision, and accuracy. With epMotion 5075 NGS solution you can leave all the tedious pipetting and complicated handling to a dependable robot! The solution comprises of a complete epMotion 5075t workstation including software, all basic accessories and a selection of consumables required to start to automate the majority of NGS library preparation kits. Together with directly connected services products the epMotion 5075 NGS solution is positioned as the preferred solution for small to medium sample throughput NGS customers.



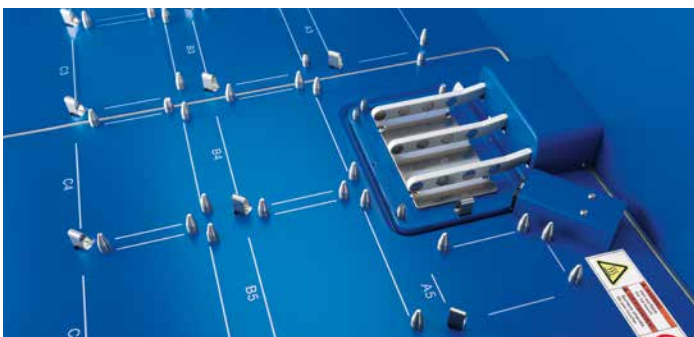


Eppendorf epMotion® 5075m

The **epMotion 5075m** is the most flexible member of the epMotion family of automated pipetting systems. With a large number of worktable positions and the mixing, temperature control and magnetic bead separation abilities it is ideally suited for various applications in the lab.

Same as 5075t, plus

> Eppendorf 3D-MagSep Technology – Facilitates magnetic separation, mixing and temperature control in one location





NGS Made Easy

Next-generation sequencing sample preparation is a labor-intensive process, which requires experience, precision and accuracy to generate high-quality NGS libraries. The Eppendorf epMotion can automate this pipetting-intensive protocol into a ready-to-run procedure with minimal user-interventions and setup time even for runs with low sample numbers. To minimize programming time and get you up and running quickly, Eppendorf provides pre-optimized and manufacturer-qualified NGS reagent kit methods that

will result in reproducible preparation of high-quality NGS libraries. The sequencing results are comparable or better to those from manual preparation. Trust in the Eppendorf epMotion to automate your NGS library preparation and eliminate the risk of pipetting errors, provide reproducible results and increase overall productivity. You can choose between a complete solution for processing up to 24 or up to 96 samples without user-intervention to get more time for other tasks.

Specific benefits of epMotion 5073m NGS solution

- > Process up to 24 samples in parallel
- > Increased space for tips to reduce user-intervention
- > 3 positions for pipetting tools to have the ideal tool ready when needed
- > Novel Reservoir Rack to store up to 112 tips of different sizes to save tips and costs - Only load the tips you really need
- > Store reagents and consumables in only one deck position with the flexible Reservoir Rack
- > Connect the epMotion to VisioNize® to monitor temperatures, run-time, next user-intervention and error indication

Specific benefits of the epMotion 5075 NGS solution

- > Process up to 96 samples in parallel
- > Automatic Tool Selection automatically decides which tools (single or 8-channel) to use for fastest run time – ideal when sample numbers change frequently or are not a multiple-of-8
- > Improved results due to unique options that help remove remaining liquid after washing steps more effectively to prevent carryover that could be detrimental to library prep
- > Email notification option keeps you informed about the status of your library prep run
- > 3D run simulation helps you optimize the speed and efficiency of new protocols
- > Capability for stacking plates and tip boxes maximizes available deck space and increases run times without user intervention
- > The integrated, high-performance Eppendorf ThermoMixer® and thermal elements allow for efficient mixing and reliable temperature control



Ease of Use and Flexibility

The Eppendorf EasyCon tablet is optimized for simple and comfortable access to liquid handling automation. Its space saving size is designed especially for the smaller members of the *epMotion* family, 5070 & 5073. It has a large color display and is operated by touch or mouse control. The key feature of the Eppendorf EasyCon tablet is its flexibility with pre-installed software for easy and fast application runs and the *epBlue* studio software for programming more complex liquid handling tasks.

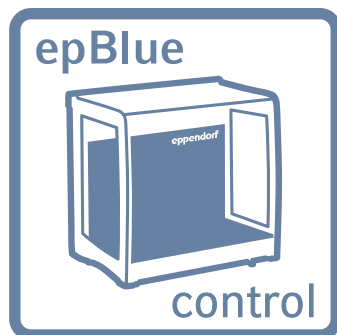
- > Touch screen or mouse control
- > *epBlue* software
- > 4x USB 2.0 ports for data transfer
- > Data backup
- > CSV and XML file exchange
- > No extra power supply needed

The Eppendorf MultiCon PC versions define a new dimension in ease-of use and safety. As premium product, the industrial PC ensures maximum working reliability by standardization and has undergone the multiple quality checks before delivery. The MultiCon controller fulfills high expectations at best performance for the *epMotion* 5075 versions.

- > Simplify – Large touch screen or mouse and keyboard control
- > Network interface allows the remote control of *epMotion* via direct Ethernet connection
- > Pre-installed *epBlue* software
- > CSV and XML file exchange via USB or LAN
- > Safe operation due to data-base repository
- > Run simulation with 3D-view on the workstation
- > 5 USB & 2 Ethernet ports
- > Upgrade option to *epBlue* ID software
- > Development in compliance to GAMP 5 (parts 3/4/7)
- > Upgrade option to *epBlue* GxP software



epMotion® software – Simplify your programming

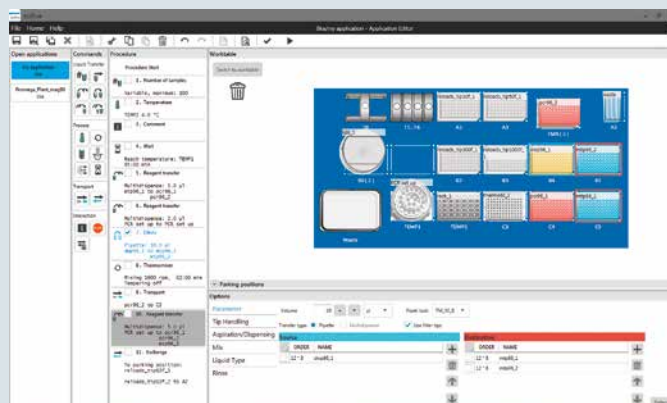
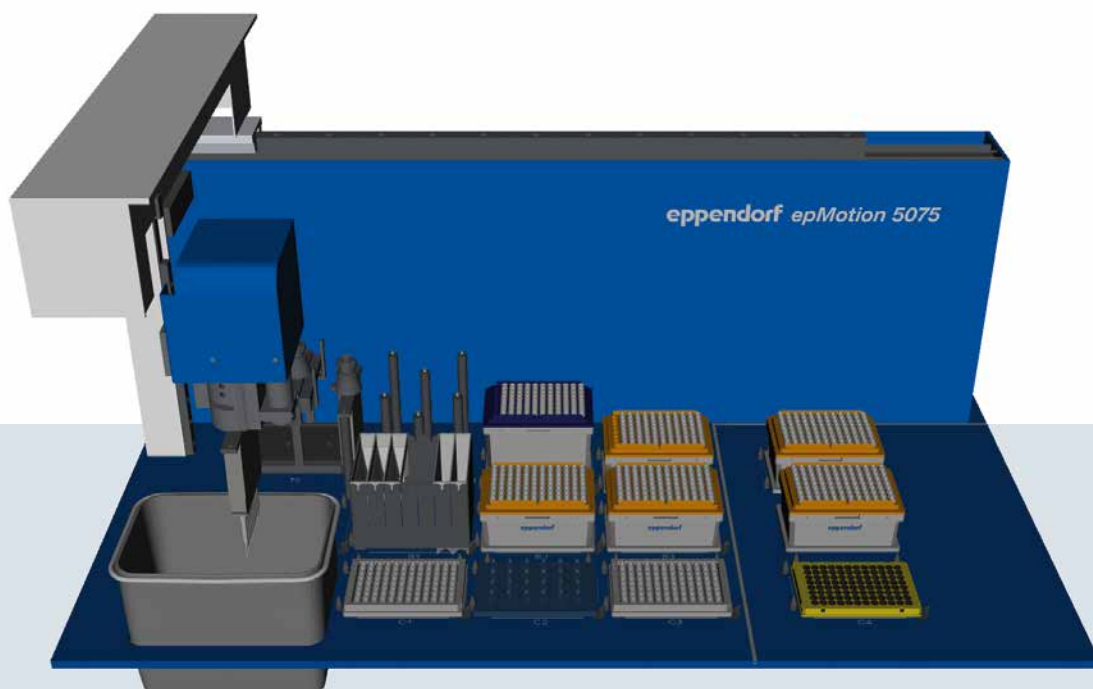


epBlue – Intuitive operation and programming

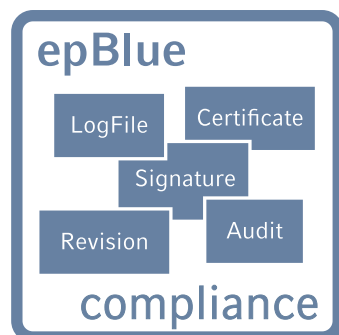
Simple and clear. epBlue is pre-installed on every epMotion system and guides you through your everyday pipetting tasks: Choose your objective in the home section and follow the epBlue commands from left to right with guided menus

and the consistent, touchable structure. With the unmatched ease-of-use of epBlue, even complex methods can be generated in minutes.

- > Intuitive graphical user interface
- > Pattern recognition for easy programming of complex patterns in 96 or 384 wells
- > Cut and paste feature allows for fast method modification and adaptation
- > Large labware data base – use almost any possible labware
- > Liquid classes – for highest performance of pipetting various liquids
- > CSV import of files for normalization and cherry picking
- > Safe operation through 3D run simulation. Before starting your application, you can simulate the run. (only MultiCon versions)
- > User management (only MultiCon versions)
- > Create, edit and simulate applications on any Windows 7 PC with epMotion Editor 40 software



Upgrades for the features you need



epBlue GxP – Solution for automated pipetting according to 21 CFR part 11

The GxP solution was developed according to GAMP 5 (parts 3/4/7) and tailored for organizational and process requirements of 21 CFR part 11, 58, 211 and 820, GLP and GAMP.

The epBlue GxP solution consists of the epMotion automated pipetting system, software and services that are designed to significantly shorten the timeline of your process validation and qualification.

Eppendorf as a supplier has already taken care of the major part of the regulatory required system validation and qualification. Thus the user can focus on their part of the application validation.

- > Complete electronic documentation
- > User level management and access control
- > Audit trail and log file
- > Revision management
- > Configurable workflow management
- > Export and archiving of digitally signed documents
- > epBlue ID tracking using bar codes (optional extension)

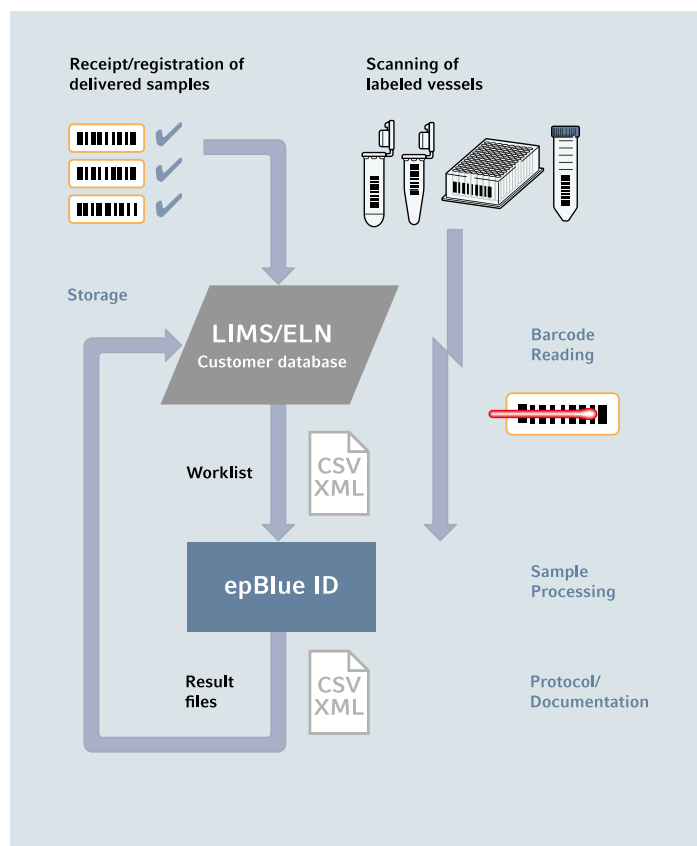


epBlue ID – Secure barcode scanning-tracking-documentation

epBlue ID software module allows for safe data exchange with laboratory information management systems (LIMS) and simplifies external communication. The barcode scanner enables the user to record barcodes on all tube

types and microplates. Reagents can be documented with type and lot number. After manually scanning the barcodes, epBlue ID will store the IDs in its database from which data can be verified at any time. A result file containing sample IDs and their final location is generated by epBlue ID when the liquid handling process is completed. The result ID list can then be exported to a network drive and uploaded to a LIMS.

- > Visual guidance of the scanning process
- > Documentation of reagent type and batch
- > Compatible with LIMS generated worklists



Accuracy and Reproducibility Delivered

epMotion pipetting tools

Based on Eppendorf classic air cushion pipetting technology

- > Free-jet pipetting, no tubes, no wires, no air bubbles to minimize cross-contamination
- > Use contact pipetting for small volumes, from 1 μL down to 200 nL
- > Excellent pipetting precision, below 2 % CV at 1 μL *
- > Volume range: 0.2–10 μL ; 1–50 μL ; 20–300 μL and 40–1,000 μL
- > Single or 8-channel
- > Autoclavable & easy to maintain
- > Automatic calibration warning
- > Calibration based on ISO 8655-6

* Eppendorf application note 168: »Evaluation of the Eppendorf epMotion® Pipetting Tools using the Artel MVS®.«



epT.I.P.S.® Motion

Special tips for use in automated systems. Each tip is inspected for straightness prior to packaging. This ensures a perfect handling of 96- and 384-well micro- and PCR plates

- > Color-coded tray for easy volume identification
- > Non-carbonized, pure virgin polypropylene, both tip and box are recyclable
- > Standard, filter, and sterile tips available
- > PCR clean quality grade for filter tips
- > Also available as eco-friendly reload system

Re-use tips feature

The new epMotion systems can re-use tips as e.g. economical choice for multiple wash steps of the same well. Here special epT.I.P.S. Motion SafeRack tips are recommended

- > Individual compartments to avoid cross-contamination between used tips
- > Available as standard and PCR clean quality for 50 μL and 1,000 μL





epServices for epMotion® – Keep Your Process in Motion

It's all about accuracy and reliability

The epMotion and its dispensing tools are precision instruments. As such, they require regular maintenance, which help prevent failures and keep your processes moving forward. Regular calibration of the dispensing tools will ensure system accuracy, precision and reliability.

Our Performance Plan options will allow you to maintain premium functioning of your epMotion over the life of the system. Eppendorf's highly skilled service technicians perform the adjustments and repairs to return your system to manufacturer specifications.

epServices include:

- > Cleaning, inspection and system maintenance
- > Eppendorf quality spare parts
- > Software update as needed
- > Instrument adjustments as needed
- > Functional tests with service diagnostic methods
- > Calibration of dispensing tools based on ISO 8655-6
- > Calibration of level sensor, carrier arm, thermal module and vacuum manifold
- > Operational Qualification certification
- > Full documentation and certificates
- > 1 year extended warranty

> Further information: www.eppendorf.com/epServices
For local offers please visit our local websites. Performance Plans and service products may vary according to country. Discuss with Service.



All Your Favourite Labware – epMotion® Accessories

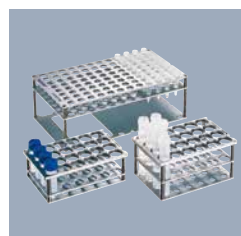
Whether 0.2 mL PCR tubes, 1.5, 2 or 5 mL test tubes, 15 or 50 mL conical tubes, six-well plates, 96/384-well microplates,

PCR plates, or deep-well plates – with epMotion accessories, you can handle it.



ReservoirRack

Enables positioning of up to 7 reagent rack modules or reservoirs with 30 mL or 100 mL filling volume.



Racks for single test tubes

For micro test tubes, glass, or plastic tubes. Fifteen different formats available.



ReservoirRack 3

Small rack for epMotion 5075m and 5075t versions for 3 additional reagent or liquid waste reservoirs (30 or 100 mL).



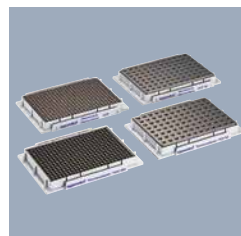
Thermoracks for 24 × Safelock 0.5/1.5/2 mL tubes

Temperature-controlled when used with a thermal module. Available also for Cryotubes and as version for Eppendorf ThermoMixer®.



ReservoirRack modules TC

Eight module sizes are available to use tubes from 0.2 mL PCR, 5 mL to 50 mL tubes. Temperature-controlled when used with a thermal module.



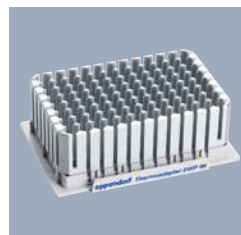
Thermoracks and adapters

For use with 96-well or 384-well plates and single 0.2 mL tubes. Thermoracks can be transported with gripper. On Thermo adapters plates can be exchanged by the gripper.



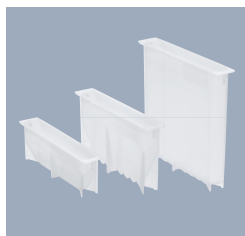
ReservoirRack Module TC 5.0 mL

For 4 × Eppendorf Tubes® 5.0 mL. Up to 3 modules can be placed in ReservoirRack, temperature control possible.



Thermoadapter DWP 96

For heating or cooling of 1 mL deep-well plates. Plates can be exchanged by the gripper.



30 mL and 100 mL reagent reservoirs

The reagent reservoirs are PCR clean, autoclavable, and can be placed in the ReservoirRack. Both can be temperature controlled with special ReservoirRack module.



Integrated thermal module

Modification kit for epMotion 5073 and 5075. For heating or cooling (0–110 °C) of thermoadapter, thermoblock, thermorack and ReservoirRack.



Height adapter

Three height adapters enable exact height level adjustment and accelerated processing of microplates.



ReagentRack

To hold the reagent tray from MagSep reagent kits.



Gripper

For transport of plates, thermoblocks and other labware on worktable of epMotion 5073 & 5075.



TipHolder

Autoclavable, aluminum Tipholder for tip tray of reload system, reduces waste by up to 40 percent.



Work surface adapter

Adapters can be screwed under workstation and increase working height by 5.5 cm up to a maximum of 16.5 cm.



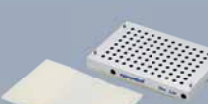
Vac Thermo lid

Use with Vacuum station to apply heated air to samples for improved drying.



Liquid waste tub

Mounted in waste bin, the liquid waste tub separates liquid waste with working volume of 115 mL.



Vacuum lid

For use with Vacuum station to apply vacuum to a reduced number of samples. Grippable and special sealing mats for lid available.



PrepRack

For magnetic separation in 1.5/2.0 mL Safe-Lock tubes with magnetic finger module. 24 samples, temperature control possible.



Reservoir 400 mL

Large-volume container in SBS format as e.g. liquid waste collection vessel for vacuum applications on the epMotion, autoclavable.

Technical Specifications

Surface of systems		5070	5073	5075
	Width	39 in/98 cm	39 in/98 cm	56 in/140 cm
	Depth	24 in/62 cm	30 in/75 cm	30 in/75 cm
Dimensions of device		5070	5073	5075
	Width	26 in/65 cm	26 in/65 cm	43 in/107 cm
	Depth	19 in/48 cm	24 in/61 cm	24 in/61 cm
	Height	25 in/63 cm	27 in/67 cm	27 in/67 cm
CleanCap extra	Height	n.a.	4 in/10 cm	4 in/10 cm

Weight (without packaging and accessories)					
5070	45 kg	99.2 lb	5075l	85 kg	187.4 lb
5070f	33 kg	72.8 lb	5075t	87 kg	191.8 lb
5073l	50 kg	110 lb	5075v	86 kg	189.6 lb
5073m	57 kg	125.7 lb	5075vt	90 kg	198.4 lb
			5075m	88 kg	194 lb
CleanCap (5073)	5 kg	11 lb	CleanCap (5075)	10 kg	22.1 lb

Power supply		5070	5073	5075
Voltage		100–240 V ± 10 %	100–240 V ± 10 %	100–240 V ± 10 %
Frequency		50–60 Hz ± 5 %	50–60 Hz ± 5 %	50–60 Hz ± 5 %
Standby		50 W	50 W	50 W
Max output		150 W	600 W	700 W

Pipetting performance specifications measured based on ISO 8655-6

Single-channel tool	Volume	Systematic measurement error	Random measurement error
TS 10	10 μ L	± 0.8 %	± 0.25 %
	1 μ L	± 3.0 %	± 3.0 %
	200 nL*	± 9 %	± 6 %
TS 50	50 μ L	± 1.2 %	± 0.4 %
	1 μ L	± 15 %	± 5 %
TS 300	300 μ L	± 0.6 %	± 0.3 %
	20 μ L	± 4 %	± 2.5 %
TS 1000	1,000 μ L	± 0.7 %	± 0.15 %
	40 μ L	± 5 %	± 1.5 %

in pipetting mode, free jet

* in pipetting mode, contact, typical pipetting performance

Typical pipetting performance (MVS data for epMotion 5070)*

Single-channel tool	Volume	systematic measurement error	random measurement error
TS 10**	10 μ L	± 0.27 %	± 0.13 %
	1 μ L	± 2 %	± 2 %
	200 nL	± 9 %	± 6 %
TS 50	50 μ L	± 0.6 %	± 0.1 %
	1 μ L	± 5.4 %	± 1.6 %
TS 300	300 μ L	± 0.7 %	± 0.13 %
	20 μ L	± 0.9 %	± 0.2 %
TS 1000	200 μ L	± 1.4 %	± 0.1 %
	40 μ L	± 0.8 %	± 0.2 %

* Eppendorf application Note 168: »Evaluation of the Eppendorf epMotion® Pipetting Tools using the Artel MVS«

** Typical pipetting performance in contact mode water measured by gravimetry

Conductor	Systematic measurement error	Random measurement error
X, Y, Z Positioning:	± 0.3 mm	± 0.1 mm
Detector		
Optical confocal infrared detector	contact-free detection of liquid levels, tools used, labware worktables, tip types and quantities	
Optical sensor	liquid surface must be 90 ± 3° to the vertical plane of the optical sensor	
Gripper		
Carrying capacity	1,200 g	
Vacuum unit		
Max output	35 NI/min	
Suction range	0.1–85 kPa	
Suction time	1 sec to 36 min	
Eppendorf ThermoMixer®		
Mixing frequency	Off, 300–2,000 rpm, optimized for labware and application	
Mixing amplitude	3 mm	
Temperature range	–15 °C below RT to 95 °C measured in labware at 75 % filling height	
Temperature homogeneity	≤ 10 % on the block	
Heating rate	5 °C/min, on the block	
Cooling rate	3 °C/min, on the block, above RT	
Setting range time	5 sec–120 min	
Optional thermal module		
Setting range time	1 min–120 min	
Setting range temperature	0 °C–110 °C (32°F–230°F)	
CleanCap		
HEPA filter	70–80 m³/h (5073); 70–120 m³/h (5075); class E10	
UV light	254 nm (UV-C)	
UV lamp power 1m distance	39 µW/cm²	

Configuration options to be ordered with basic epMotion® devices

Configuration option description	Ordering no.	5075l	5075t	5075v	5075vt	5075m
Eppendorf EasyCon™ tablet	5073 000 108	–	–	–	–	–
Eppendorf MultiCon PC controller incl. keyboard	5075 001 101	✓	✓	✓	✓	✓
Completely contained housing	5075 751 623	✓	✓	✓	✓	✓
CleanCap & completely contained housing	5075 751 607	opt.	opt.	opt.	opt.	opt.
Thermal module on position C1	5075 002 604	opt.	opt.	opt.	opt.	opt.
Thermal module on position C2	5075 002 612	opt.	opt.	opt.	opt.	opt.
Thermal module on position C3	5075 002 620	opt.	–	opt.	–	–
Gripper for labware transport, incl. holder	5282 000 018	opt.	opt.	incl.	incl.	opt.
epBlue™ ID, barcode & tracking software incl. manual barcode scanner	5075 002 701	opt.	opt.	opt.	opt.	opt.
epBlue™ GxP, software for supporting regulatory compliance	5075 002 728	opt.	opt.	opt.	opt.	opt.

Legend: ✓ = Please add this option for working configuration

incl. = Already included in this basic epMotion® device

– = Selection of this option is not possible for this basic epMotion® device

opt. = Add this option to increase functionality of this basic epMotion® device

Ordering Information

System ordering information does not apply for U.S.A. and Canada

Description	Ordering no.
epMotion® 96 , semi-automated electronic pipette for parallel 96 channel microplate processing (without iPod® controller), 0.5–300 µL	5069 000 012
epMotion® 96 , with 2-position slider, semi-automated electronic pipette for parallel 96 channel microplate processing (with 2 positions, without iPod® controller), 0.5–300 µL	5069 000 110
epMotion® 96xl , semi-automated electronic pipette for parallel 96 channel microplate processing (without iPod® controller), 5–1,000 µL	5069 000 217
epMotion® 96xl , with 2-position slider, semi-automated electronic pipette for parallel 96 channel microplate processing (without iPod® controller), 5–1,000 µL	5069 000 314
epMotion® 5070 EasyCon™ , completely contained housing, system incl. Eppendorf EasyCon™, epBlue™ software, mouse, waste box, 100–240 V ±10 %/50–60 Hz ±5 %, 0.2 µL–1 mL	5070 006 032
epMotion® 5070 MultiCon , completely contained housing, system incl. Eppendorf MultiCon, epBlue™ software, keyboard, mouse, waste box, 100–240 V ±10 %/50–60 Hz ±5 %, 0.2 µL–1 mL	5070 000 282
epMotion® 5070f EasyCon™ , system incl. Eppendorf EasyCon™, epBlue™ software, mouse, waste box, 100–240 V ±10 %/50–60 Hz ±5 %, 0.2 µL–1 mL	5070 006 108
epMotion® 5070f MultiCon , system incl. Eppendorf MultiCon, epBlue™ software, keyboard, mouse, waste box, 100–240 V ±10 %/50–60 Hz ±5 %, 0.2 µL–1 mL	5070 000 283
epMotion® 5073m EasyCon™ , completely contained housing, system incl. Eppendorf EasyCon™, MagSep module, Eppendorf ThermoMixer®, epBlue™ software, mouse, waste box, 100–240 V ±10 %/50–60 Hz ±5 %, 0.2 µL–1 mL	5073 000 787
epMotion® 5073m MultiCon , completely contained housing, system incl. Eppendorf MultiCon, MagSep module, Eppendorf ThermoMixer®, epBlue™ software, keyboard, mouse, waste box, 100–240 V ±10 %/50–60 Hz ±5 %, 0.2 µL–1 mL	5073 000 795
epMotion® 5073mc EasyCon™ , CleanCap, system incl. Eppendorf EasyCon™, MagSep module, Eppendorf ThermoMixer®, CleanCap, epBlue™ software, mouse, waste box, 100–240 V ±10 %/50–60 Hz ±5 %, 0.2 µL–1 mL	5073 000 809
epMotion® 5073mc MultiCon , CleanCap, system incl. Eppendorf MultiCon, MagSep module, Eppendorf ThermoMixer®, CleanCap, epBlue™ software, keyboard, mouse, waste box, 100–240 V ±10 %/50–60 Hz ±5 %, 0.2 µL–1 mL	5073 000 817
epMotion® M5073 , 100–240 V/50–60 Hz, with Eppendorf EasyCon™, epBlue™ software, TS 50, TS 1000, PrepRack, ReagentRack, Rack24 accessories	5073 000 205
epMotion® M5073c , 100–240 V/50–60 Hz, with CleanCap, control tablet, epBlue™ software, TS 50, TS 1000, PrepRack, ReagentRack, Rack24 accessories	5073 000 400
epMotion® 5073l EasyCon™ , completely contained housing system incl. Eppendorf EasyCon™, epBlue™ software, mouse, waste box, 100–240 V ±10 %/50–60 Hz ±5 %, 0.2 µL–1 mL	5073 000 582
epMotion® 5073l MultiCon , completely contained housing system incl. Eppendorf MultiCon, epBlue™ software, keyboard, mouse, waste box, 100–240 V ±10 %/50–60 Hz ±5 %, 0.2 µL–1 mL	5073 000 590
epMotion® 5073lc EasyCon™ , CleanCap, system incl. Eppendorf EasyCon™, epBlue™ software, mouse, waste box, 100–240 V ±10 %/50–60 Hz ±5 %, 0.2 µL–1 mL	5073 000 604
epMotion® 5073lc MultiCon , CleanCap, system incl. Eppendorf MultiCon, epBlue™ software, keyboard, mouse, waste box, 100–240 V ±10 %/50–60 Hz ±5 %, 0.2 µL–1 mL	5073 000 612
epMotion® P5073 , for automatic preparation of PCR reactions, 100–240 V/50–60 Hz, with Eppendorf EasyCon™, epBlue™ software, TS 50, TS 300, thermoblock, Rack24 accessories	5073 000 000
epMotion® P5073c , for automatic preparation of PCR reactions, 100–240 V/50–60 Hz, with CleanCap, Eppendorf EasyCon™, epBlue™ software, TS 50, TS 300, thermoblock, Rack24 accessories	5073 000 302
For epMotion® 5075 systems order basic device with mandatory or optional configuration items from the matrix on page 29	
epMotion® 5075l , basic device incl. epBlue™ software, mouse, waste box, 100–240 V ±10 %/50–60 Hz ±5 %, 0.2 µL–1 mL	5075 000 301
epMotion® 5075v , basic device incl. vacuum system, gripper, vac frame 2, vac frame holder, epBlue™ software, mouse, waste box, 100–240 V ±10 %/50–60 Hz ±5 %, 0.2 µL–1 mL	5075 000 303
epMotion® 5075t , basic device incl. Eppendorf ThermoMixer®, epBlue™ software, mouse, waste box, 100–240 V ±10 %/50–60 Hz ±5 %, 0.2 µL–1 mL	5075 000 302
epMotion® 5075t NGS solution , package with completely contained housing, MultiCon PC, Enhanced Feature Set 1, C2 thermal module, 4 tools, gripper, plus NGS specific accessories and consumables, 100–240 V ±10 %/50–60 Hz ±5 %, 0.2 µL–1 mL	5075 000 962
epMotion® 5075tc NGS solution , package with CleanCap, MultiCon PC, Enhanced Feature Set 1, C2 thermal module, 4 tools, gripper, plus NGS specific accessories and consumables, 100–240 V ±10 %/50–60 Hz ±5 %, 0.2 µL–1 mL	5075 000 963
epMotion® 5075vt , basic device incl. vacuum system, gripper, vac frame 2, vac frame holder, Eppendorf ThermoMixer®, epBlue™ software, mouse, waste box, 100–240 V ±10 %/50–60 Hz ±5 %, 0.2 µL–1 mL	5075 000 304
epMotion® 5075m , basic device incl. MagSep module, Eppendorf ThermoMixer®, epBlue™ software, mouse, waste box, 100–240 V ±10 %/50–60 Hz ±5 %, 0.2 µL–1 mL	5075 000 305

Description	International Ordering no.	North America Ordering no.
Dispensing tools		
Highly precise pipetting heads, for use in the tool holder of the epMotion® workstation. Each dispensing tool is completely autoclavable at 121 °C, 1 bar for 20 min. A quality certificate for the measurement results accompanies each tool.		
TS 10, single-channel dispensing tool for the volume range 0.2–10 µL	5280 000 100	
TS 50, single-channel dispensing tool for the volume range 1–50 µL	5280 000 010	960001010
TS 300, single-channel dispensing tool for the volume range 20–300 µL	5280 000 037	960001028
TS 1000, single-channel dispensing tool for the volume range 40–1,000 µL	5280 000 053	960001036
TM 10-8, 8-channel dispensing tool for the volume range 0.2–10 µL	5280 000 304	
TM 50-8, 8-channel dispensing tool for the volume range 1–50 µL	5280 000 215	960001044
TM 300-8, 8-channel dispensing tool for the volume range 20–300 µL	5280 000 231	960001052
TM 1000-8, 8-channel dispensing tool for the volume range 40–1,000 µL	5280 000 258	960001061
Holder for 6 dispensing tools	5075 774 003	960001109
epT.I.P.S.® Motion pipette tips		
Pipette tips in individual racks, for use with the epMotion®. Tip type and size are automatically recognized on the device. 96 epT.I.P.S.®/rack		
Without filter		
10 µL, sterile, volume range 0.2–10 µL, 10 × 96 tips in racks	0030 015 185	
50 µL, sterile, volume range 1–50 µL, 10 × 96 tips in racks	0030 015 207	
300 µL, sterile, volume range 20–300 µL, 10 × 96 tips in racks	0030 015 223	
1,000 µL, sterile, volume range 40–1,000 µL, 10 × 96 tips in racks	0030 015 240	
10 µL, Eppendorf Quality™, volume range 0.2–10 µL, 10 × 96 tips in racks	0030 014 383	
50 µL, Eppendorf Quality™, volume range 1–50 µL, 10 × 96 tips in racks	0030 014 405	
300 µL, Eppendorf Quality™, volume range 20–300 µL, 10 × 96 tips in racks	0030 014 448	
1,000 µL, Eppendorf Quality™, volume range 40–1,000 µL, 10 × 96 tips in racks	0030 014 480	
10 µL, Reloads, Eppendorf Quality™, volume range 0.2–10 µL, Reloads, 12 × 2 trays with 96 tips	0030 014 545	
50 µL, Reloads, Eppendorf Quality™, volume range 1–50 µL, Reloads, 12 × 2 trays with 96 tips	0030 014 421	
300 µL, Reloads, Eppendorf Quality™, volume range 20–300 µL, Reloads, 12 × 2 trays with 96 tips	0030 014 464	
1,000 µL, Reloads, Eppendorf Quality™, volume range 40–1,000 µL, Reloads, 12 × 2 trays with 96 tips	0030 014 502	
50 µL, SafeRacks, Eppendorf Quality™, volume range 1–50 µL, 10 × 96 tips in racks	0030 014 600	
1,000 µL, SafeRacks, Eppendorf Quality™, volume range 40–1,000 µL, 10 × 96 tips in racks	0030 014 642	
With filter		
10 µL, sterile, PCR clean, volume range 0.2–10 µL, 10 × 96 tips in racks	0030 015 193	
50 µL, sterile, PCR clean, volume range 1–50 µL, 10 × 96 tips in racks	0030 015 215	
300 µL, sterile, PCR clean, volume range 20–300 µL, 10 × 96 tips in racks	0030 015 231	
1,000 µL, sterile, PCR clean, volume range 40–1,000 µL, 10 × 96 tips in racks	0030 015 258	
10 µL, PCR clean, volume range 0.2–10 µL, 10 × 96 tips in racks	0030 014 391	
50 µL, PCR clean, volume range 1–50 µL, 10 × 96 tips in racks	0030 014 413	
300 µL, PCR clean, volume range 20–300 µL, 10 × 96 tips in racks	0030 014 456	
1,000 µL, PCR clean, volume range 40–1,000 µL, 10 × 96 tips in racks	0030 014 499	
10 µL, Reloads, PCR clean, sterile, volume range 0.2–10 µL, Reloads, 12 × 2 trays with 96 tips	0030 014 561	
50 µL, Reloads, PCR clean, sterile, volume range 1–50 µL, Reloads, 12 × 2 trays with 96 tips	0030 014 529	
300 µL, Reloads, PCR clean, sterile, volume range 20–300 µL, Reloads, 12 × 2 trays with 96 tips	0030 014 537	
10 µL, Reloads, PCR clean, volume range 0.2–10 µL, Reloads, 12 × 2 trays with 96 tips	0030 014 553	
50 µL, Reloads, PCR clean, volume range 1–50 µL, Reloads, 12 × 2 trays with 96 tips	0030 014 430	
300 µL, Reloads, PCR clean, volume range 20–300 µL, Reloads, 12 × 2 trays with 96 tips	0030 014 472	
1,000 µL, Reloads, PCR clean, volume range 40–1,000 µL, Reloads, 12 × 2 trays with 96 tips	0030 014 510	
50 µL, SafeRacks, PCR clean, volume range 1–50 µL, 10 × 96 tips in racks	0030 014 618	
1,000 µL, SafeRacks, PCR clean, volume range 40–1,000 µL, 10 × 96 tips in racks	0030 014 650	
Tipholder for epMotion® reloadable tips	5075 751 399	

Description	International Ordering no.	North America Ordering no.
Other consumables for epMotion®		
10 mL reservoir , for use with reservoir rack, 5 × 10 large volume reservoirs, PCR clean	0030 126 521	
30 mL reservoir , for use with reservoir rack, 5 × 10 large volume reservoirs, PCR clean	0030 126 505	960051009
100 mL reservoir , for use with reservoir rack, 5 × 10 large volume reservoirs, PCR clean	0030 126 513	960051017
Reservoir 400 mL , large reservoir in SBS format gippable, 10 pieces, e.g. for use in vacuum station	5075 751 364	960002229
Low dead volume reservoir 195 mL , single well with 96 cavities, PCR clean, 4 × 5 reservoirs	0030 126 556	
Waste bags , for epMotion® 5070/5073/5075 waste position, up to 7 L volume, ideal for disposing of biologically-hazardous waste, autoclavable, PP material, thickness 50 µm, transparent, 50 bags	5075 751 763	
Waste bags , for epMotion® 5070/5073/5075 waste position, up to 7 L volume, ideal for disposing of non hazardous waste, autoclavable, PP material, thickness 50 µm, transparent, 50 bags	5075 751 780	
LiquidWasteTub to mount in the waste box, autoclavable, working volume 115 mL	5075 751 500	
LiquidWasteTub 400 mL , to mount in waste bag holder and waste box of epMotion, with lid, autoclavable, working volume 400 mL	5075 751 720	
Eppendorf MagSep™ Tissue gDNA Kit , reagent kit for genomic DNA purification of 4 × 24 samples from cells & tissues, for use with ReagentRack on M5073 or 5075m	0030 450 000	
Eppendorf MagSep™ Blood gDNA Kit , reagent kit for genomic DNA purification of 4 × 24 samples from blood, for use with ReagentRack on M5073 or 5075m	0030 451 007	
Eppendorf MagSep™ Viral DNA/RNA Kit , reagent kit for viral DNA/RNA purification of 4 × 24 samples, for use with ReagentRack on M5073 or 5075m	0030 452 003	

Description	International Ordering no.	North America Ordering no.
Reservoir rack modules TC		
Reservoir rack modules are inserted in a reservoir rack. They can be temperature controlled with a thermal module for heating and cooling.		
PCR 0.2 mL , for 8 × 0.2 mL PCR tubes	5075 799 049	960002601
Safe-Lock Tubes , for 4 × 0.5/1.5/2 mL tubes	5075 799 081	960002620
Tubes Ø 12 mm , for 4 × Ø 12 mm tubes	5075 799 103	960002630
Tubes Ø 16 mm , for 4 × Ø 16 mm tubes	5075 799 120	960002640
Eppendorf Tubes® 5.0 mL , for 4 × 5 mL tubes	5075 799 340	
15 mL Tubes »conical« for 4 × Ø 17 mm tubes	5075 799 162	960002650
50 mL Tubes »conical« for 2 × Ø 29 mm tubes	5075 799 189	960002660
Reservoir adapter 10 mL , for 1 × epMotion® reservoir 10 mL	5075 799 421	
Reservoir adapter 30 mL , for 1 × epMotion® reservoir 30 mL	5075 799 146	960002670
Reservoir adapter 100 mL , for 1 × epMotion® reservoir 100 mL	5075 799 260	960002680
Racks		
For individual glass or plastic tubes, no temperature control		
Ø 12 mm × 60 mm max. length	5075 792 109	960002351
Ø 12 mm × 60 mm max. length	5075 792 109	960002351
Ø 13 mm × 60 mm max. length	5075 792 087	960002342
Ø 13 mm × 100 mm max. length	5075 762 005	960002041
Ø 14 mm × 60 mm max. length	5075 792 060	960002334
Ø 14 mm × 100 mm max. length	5075 792 001	960002369
Ø 15 mm × 60 mm max. length	5075 792 044	960002326
Ø 15 mm × 100 mm max. length	5075 792 028	960002377
Ø 16 mm × 60 mm max. length	5075 776 006	960002164
Ø 16 mm × 100 mm max. length	5075 760 002	960002032
Ø 17 mm × 60 mm max. length	5075 775 000	960002156
Ø 17 mm × 100 mm max. length	5075 761 009	960002024
Rack for 24 x HPLC tubes , Ø 12 mm × 40 mm max. length	5075 792 125	960002380
Rack for 96 x 1.5/2.0 mL screw-cap tubes , requires 2 positions on the deck	5075 791 005	960002318
Rack for 24 Safe-Lock tubes 0.5 mL/1.5 mL/2.0 mL , cannot be tempered, with adapter sleeves for 0.5 mL	5075 751 453	960002511
Rack for 24 Safe-Lock tubes 1.5 mL/2.0 mL , no temperature control	5075 751 275	
Rack ILMN tubes , for single tubes, 40 × ø 8,4 mm and 12 × ø 11,2 mm	5075 751 747	
ReservoirRack , for ReservoirRack Modules TC and max. 7 of 30 mL and 100 mL reagent reservoirs	5075 754 002	960002148
ReservoirRack 3 , for max. three 30 mL or 100 mL reservoirs, only for 5075t, 5075m	5075 754 070	

Description	International Ordering no.	North America Ordering no.
Accessories for PCR/real-time PCR and NGS applications		
Rack Smart , for holding one tube rack of SmartCycler reaction tubes	5075 790 009	960002520
Rack LC , for holding up to 96 × 20 µL or 100 µL LightCycler capillaries, for use with, e.g., Centrifuge 5804/5804 R or 5810/5810 R, set of 2	5075 795 000	960002511
Thermorack CB 100 µL , for holding up to 384 × 0.1 mL strip tubes in the Corbett Research Rotor-Gene 3000	5075 767 031	960002500
Thermoadapter for PCR plates, 96-well, skirted , for use with 96 × 0.2 mL tubes or a 96-well PCR plate	5075 787 008	960002199
Thermoadapter for PCR plates, 384-well, skirted , for use with a 384-well PCR plate	5075 788 004	960002202
Thermoadapter Frosty , combination of height adapter and PCR-Cooler for cooling of skirted PCR plates	5075 789 000	960002300
Thermoblock for PCR plates, 96-well , for heating or cooling of PCR plates; plates are exchangeable using the gripper	5075 766 000	960002083
Thermoblock for PCR plates, 384-well , for heating or cooling of PCR plates; plates are exchangeable using the gripper	5075 767 007	960002091
Thermoadapter LC , designed to hold the sample cartridge of the MagNa Pure® LC System	5075 751 305	5075751305
Thermorack for 24 × 0.5 mL Safe-Lock Tubes , for a supply of 24 test tubes, temperature control	5075 769 000	960002067
Thermorack for 24 × 1.5/2 mL Safe-Lock Tubes , for a supply of 24 test tubes, temperature control	5075 771 004	960002075
Thermorack, for 24 Cryo tubes , temperature control	5075 777 055	960002491
Thermorack TMX for 24 Safe-Lock tubes, for a supply of 0.5 mL tubes on Eppendorf ThermoMixer® of M5073, 5075t, 5075vt, 5075m, temperature control no separation	5075 751 160	960002070
Thermorack TMX for 24 Safe-Lock tubes, for a supply of 1.5/2 mL tubes on Eppendorf ThermoMixer® of M5073, 5075t, 5075vt, 5075m, temperature control no separation	5075 751 186	960002080
Thermoadapter for Deep Well Plates, 96 wells/1,000 µL	5075 751 054	960002391

Description	International Ordering no.	North America Ordering no.
Accessories for vacuum station		
Vac frame holder	5075 778 009	960002237
Vac lid	5075 779 005	960002245
Mat , for vacuum lid	5075 793 008	960002407
Vac frame 1 , for skirted filter plates	5075 784 009	960002253
Vac frame 2 , for semi-skirted filter plates	5075 785 005	960002261
Collection Plate Adapter , for handling collection microtubes in microtube racks	5075 785 030	960002531
Collection Plate Adapter for MN Kits	5075 785 064	960002571
Channeling Plate Adapter 96 , for vacuum-processing foaming solutions through multiwell plates, set of 10	5075 794 004	960002540
Vac Thermo Lid , for effective drying of filter plates in epMotion® 5075 VAC vacuum chamber Note: additional thermal module required	5075 796 007	960002551
Other accessories		
Gripper , incl. holder, for transporting plates on the worktable and automatic operation of the vacuum manifold, for 5073 and 5075	5282 000 018	960002270
Waste container , receptacle for used pipette tips	5075 753 006	960002016
Waste bag holder , for epMotion® 5070/5073/5075 waste position	5075 753 103	
PrepRack for 24 Safe-Lock tubes 2 mL, for nucleic acid preparation with Eppendorf MagSep™ kits	5073 751 006	
ReagentRack to hold the reagent tray of the Eppendorf MagSep™ Kit	5075 751 429	
Height adapter 85 mm for uniform levels of labware; enables faster processing of the plate	5075 751 003	960002105
Height adapter 55 mm for uniform levels of labware; enables faster processing of the plate	5075 752 000	960002113
Height adapter 40 mm for uniform levels of pipette tips; enables faster processing of the plate	5075 755 009	960002121
Work surface adapter to raise the epMotion® instrument by 5.5 cm	5070 752 001	
Expansion board , for 5070f to support the cleanbench work surface	5070 751 005	
Adapter sleeves , 1 set = 25 pieces for reconfiguration of the thermo rack (1.5/2.0 mL) for use with 0.5 mL tubes	5075 772 000	960002172
Tipholder for epMotion® reload tips	5075 751 399	

Description	International Ordering no.	North America Ordering no.
Software and upgrade options		
Enhanced Feature Set 1 , license for epBlue™ features: flexible number of samples, intelligent selection 1- or 8-channel tool, start methods at any step, e-mail notifications, requires service visit and epBlue >40.6	5075 000 964	
epBlue™ ID software and hardware upgrade set , for PC versions (SN < 4,000), barcode support includes software, barcode reader and stand, not compatible with epMotion® panel or EasyCon versions	5075 000 830	
epBlue™ ID software and hardware upgrade set , for MultiCon versions (epMotion® SN > 4,000), barcode support includes software, barcode reader and stand, not compatible with epMotion® panel or EasyCon versions	5075 002 701	
epBlue™ GxP software upgrade , for use in regulated process environments (according to GLP, GMP, 21 CFR), for PC versions (SN < 4,000), with epBlue™ GxP software, corresponding firmware, USB hardware key, certificates. Not compatible with epMotion® panel or EasyCon versions	5075 000 849	
epBlue™ GxP software upgrade , for use in regulated process environments (according to GLP, GMP, 21 CFR), for MultiCon versions (epMotion® SN > 4,000), with epBlue™ GxP software, corresponding firmware, USB hardware key, certificates. Not compatible with epMotion® panel or EasyCon versions	5075 002 728	
epMotion® Editor , incl. editor key, for creating and editing applications, runs on the PC, compatible with epBlue™ 10.x versions	5075 014 009	960000269
epMotion® Editor , incl. editor key, for creating and editing applications, runs on the PC, compatible with epBlue™ 10.x versions, additional license	5075 015 200	960000300
epMotion® Editor 40 , software CD ROM with instructions, used to create, edit and simulate application on a PC, compatible with epBlue™ version > 40.x	5075 014 220	
epMotion® Editor 40 additional license , compatible with epBlue™ version > 40.x	5075 014 300	
Thermal module , for heating or cooling of thermoadapters, thermoblock and thermoracks, for P5073, 5073I and 5075	5075 757 001	960002181
VAC , for retrofitting a 5075 LH version into a VAC version	5075 000 610	960021011
VAC , for retrofitting a 5075I version into a 5075v – VAC version	5075 000 620	
TMX , for retrofitting a 5075 LH version into a 5075 TMX version	5075 000 628	960021055
Eppendorf ThermoMixer® , for retrofitting a 5075I version into a 5075t version with Eppendorf ThermoMixer®, for epMotion® 5075I with serial numbers > 4,000	5075 000 630	

Your local distributor: www.eppendorf.com/contact
Eppendorf AG · Barkhausenweg 1 · 22339 Hamburg · Germany
eppendorf@eppendorf.com · www.eppendorf.com
Eppendorf North America, Inc. · Phone: 800-645-3050
info@eppendorf.com · www.eppendorfna.com
Eppendorf Canada Ltd. · Phone: 800-263-8715
canada@eppendorf.com · www.eppendorfna.com

www.eppendorf.com/automation

Only for epMotion M5073, M5073c, 5073m, 5073mc and 5075m: Limited Use Label License
Notice to purchaser; limited license for research use only This product and its use may be covered by one or more patents owned by Gen-Probe Incorporated. The purchase price for this product includes only limited, nontransferable rights under certain claims of certain patents owned by Gen-Probe Incorporated to use this product for research purposes only. No other rights are conveyed. Purchaser is not granted any rights under patents of Gen-Probe Incorporated to use this product for any commercial use. Further information regarding purchasing a license under patents of Gen-Probe Incorporated to use this product for any other purposes, including, without limitation, for commercial use, may be obtained by contacting Gen-Probe Incorporated, Attn: Business Development Department, 10210 Genetic Center Drive, San Diego, California 92121-4362, U.S.A.

MVS® is a registered trademark of Artel Inc., USA. MagNa pure® is a registered trademark of Roche Diagnostics GmbH, Eppendorf®, the Eppendorf Brand Design, epMotion®, Eppendorf Tubes®, epT.I.P.S.®, VisioNize® and Eppendorf ThermoMixer® are registered trademarks of Eppendorf AG, Germany. epBlue™, Eppendorf EasyCon™, Eppendorf Quality™ and Eppendorf MagSep™ are trademarks of Eppendorf AG, Germany.
All rights reserved, including graphics and images.
Order No.: A50X X13 020/EN2/ST/0519/SSO/STEF. Copyright © 2019 by Eppendorf AG.